

Bilkent Calculus I Exams
1989 – 2011
Version 7.3

Fall 2011 Midterm I	2	Fall 2001 Final	31
Fall 2011 Midterm II	3	Fall 2000 Midterm I	32
Fall 2011 Final	4	Fall 2000 Midterm II	33
Fall 2010 Midterm I	6	Fall 2000 Final	34
Fall 2010 Midterm II	7	Fall 1999 Midterm I	34
Fall 2010 Final	8	Fall 1999 Midterm II	35
Fall 2009 Midterm I	10	Fall 1999 Final	36
Fall 2009 Midterm II	11	Fall 1997 Midterm I	36
Fall 2009 Final	11	Fall 1997 Midterm II	37
Fall 2008 Midterm I	13	Fall 1997 Final	38
Fall 2008 Midterm II	13	Fall 1996 Midterm I	38
Fall 2008 Final	14	Fall 1996 Midterm II	39
Fall 2007 Midterm I	15	Fall 1996 Final	39
Fall 2007 Midterm II	16	Fall 1995 Midterm I	40
Fall 2007 Final	18	Fall 1995 Midterm II	40
Fall 2006 Midterm I	18	Fall 1995 Final	41
Fall 2006 Midterm II	19	Fall 1994 Midterm I	41
Fall 2006 Final	20	Fall 1994 Midterm II	42
Fall 2005 Midterm I	21	Fall 1994 Final	43
Fall 2005 Midterm II	22	Fall 1993 Midterm I	43
Fall 2005 Final	23	Fall 1993 Midterm II	44
Fall 2004 Midterm I	23	Fall 1993 Final	45
Fall 2004 Midterm II	24	Fall 1992 Midterm I	46
Fall 2004 Final	25	Fall 1992 Midterm II	46
Fall 2003 Midterm I	26	Fall 1992 Final	47
Fall 2003 Midterm II	27	Fall 1991 Midterm I	48
Fall 2003 Final	27	Fall 1991 Midterm II	49
Fall 2002 Midterm I	28	Fall 1991 Final	50
Fall 2002 Midterm II	28	Fall 1990 Midterm I	51
Fall 2002 Final	29	Fall 1990 Midterm II	51
Fall 2001 Midterm I	30	Fall 1990 Final	52
Fall 2001 Midterm I	30	Fall 1989 Midterm	53

Fall 2011 Midterm I

1a. Evaluate the limit $\lim_{x \rightarrow 0} \frac{1 - \cos(x^2)}{x^2 \sin^2 x}$. (*Do not use L'Hôpital's Rule!*)

1b. Compute $\frac{d}{dx} \tan^4(5 \cos^2 7x)$. (*Do not simplify!*)

2a. Use the precise definition of the limit to show that $\lim_{x \rightarrow 2} \frac{x}{x-1} = 2$.

2b. We claim that the equation $\frac{\tan x}{x} = \frac{3}{2}$ has at least one positive root.

i. Consider the following 'proof' of this claim:

Let $f(x) = 2 \tan x - 3x$. Then $f(\pi/3) = 2\sqrt{3} - \pi > 0$ and $f(\pi) = -3\pi < 0$. Therefore there is c in $[\pi/3, \pi]$ such that $f(c) = 0$ by the Intermediate Value Theorem. It follows that c is a positive root of the given equation.

Explain in one sentence what is wrong with this proof.

ii. Give a correct proof of this claim.

3a. A light shines from the top of a pole 5 m high. A ball is dropped from a point 4 m away from the pole. Find how fast the shadow of the ball is moving when the ball is 2 m above the ground and moving at a speed of 9 m/sec.

3b. Compute $\sqrt[3]{63.7}$ approximately using a suitable linearization of the function $f(x) = \sqrt[3]{x}$.

4. Find the absolute maximum and minimum values of $f(x) = x^4 - 10x^2 + 8x$ on the interval $[-1, 3]$.

5. In each of the following if there exists a function f whose domain is the entire real line and that satisfies the given condition, give an example of such a function; otherwise just write DOES NOT EXIST inside the box. No further explanation is required.

a. $f(x)$ is not differentiable at $x = 0$ and $(f(x))^2$ is differentiable at $x = 0$.

$f(x) =$

b. $f'(3) = 5$ and $\lim_{x \rightarrow 3} f(x) = \infty$.

$f(x) =$

- c. $f(3) = 5$ and $\lim_{x \rightarrow 3} f'(x) = \infty$.

$$f(x) = \boxed{}$$

- d. f is not constant and $(f'(x))^2 - f(x)$ is constant.

$$f(x) = \boxed{}$$

- e. $y = 2x + 5$ is the equation of the tangent line to the graph of $y = f(x)$ at the point with $x = 3$ and $f'(3) = 11$.

$$f(x) = \boxed{}$$

Fall 2011 Midterm II

1. Evaluate the following integrals.

a. $\int \frac{\sin x - \cos x}{\sqrt[3]{\sin x + \cos x}} dx$

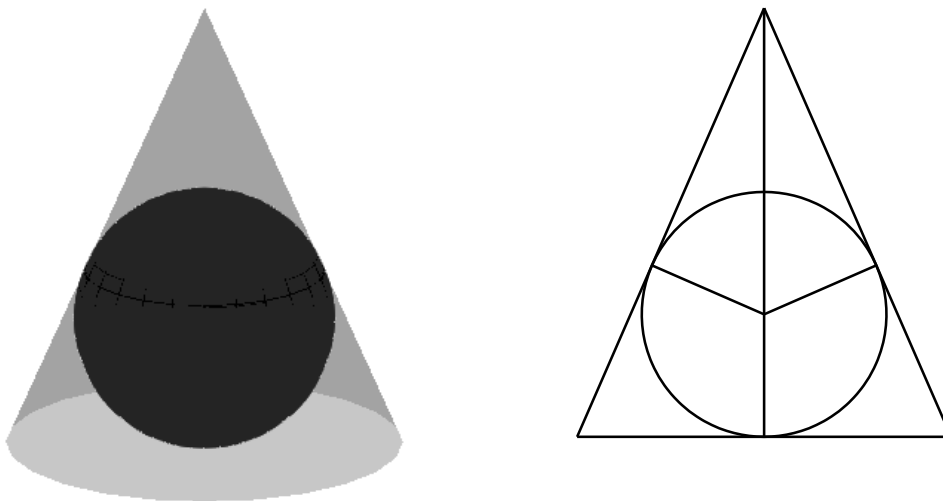
b. $\int_2^5 \frac{x}{\sqrt{x-1}} dx$

- 2a. Suppose that $\frac{dy}{dx} = \frac{x}{y^2 + 1}$ for all x and $y(0) = -1$. Find all x for which $y(x) = 0$.

- 2b. Find the area of the region that lies below the line $y = 2x$ and between the parabolas $y = x^2$ and $y = x^2/2$.

3. Suppose that f is a continuous and positive function on $[0, 5]$, and the area between the graph of $y = f(x)$ and the x -axis for $0 \leq x \leq 5$ is 8. Let $A(c)$ denote the area between the graph of $y = f(x)$ and the x -axis for $0 \leq x \leq c$, and let $B(c)$ denote the area between the graph of $y = f(x)$ and the x -axis for $c \leq x \leq 5$. Let $R(c) = A(c)/B(c)$. If $R(3) = 1$ and $\left. \frac{dR}{dc} \right|_{c=3} = 7$, find $f(3)$.

4. Find the smallest possible volume of a cone that contains a sphere of radius 1.



5. A twice-differentiable function f satisfies the following.

- $f'(x) > 0$ for $x < 0$ and $f'(x) < 0$ for $x > 0$
- $f''(x) > 0$ for $x < -2$ and $x > 1$, and $f''(x) < 0$ for $-2 < x < 1$
- $f(-2) = 2$, $f(0) = 5$, $f(1) = 4$
- $\lim_{x \rightarrow -\infty} f(x) = 0$ and $\lim_{x \rightarrow \infty} f(x) = 3$

- a. Sketch the graph of $y = f(x)$. Make sure to clearly show all important features.
- b. Explain in one sentence why f cannot be a polynomial.
- c. Explain in one sentence why f cannot be a rational function.

Fall 2011 Final

1. Evaluate the following integrals.

a. $\int \frac{\sin x + \cos x}{\tan x + \cot x} dx$

b. $\int_0^{\pi/2} \frac{\sin 2x}{1 + \cos^4 x} dx$

2a. Find a formula expressing $\int \frac{dx}{(x^2 + 1)^{n+1}}$ in terms of $\int \frac{dx}{(x^2 + 1)^n}$ for $n \geq 1$.

2b. Find y'' at $(x, y) = (\pi/6, \pi/3)$ if $y = 2x \sin(x + y)$.

3. Evaluate the limit $\lim_{x \rightarrow 0} \left(\frac{\ln(1+x)}{x} \right)^{1/x}$.

4. a. Show that $\int_0^\infty t^n e^{-t} dt = n \int_0^\infty t^{n-1} e^{-t} dt$ for all $n \geq 1$.

b. Let R be the region between the graph of $y = \sqrt{x} e^{-ax}$ and the x -axis where a is a positive constant. Let V be the volume of the solid generated by revolving R about the x -axis, and let W be the volume of the solid generated by revolving R about the y -axis. Find all values of a for which $V = W$.

$$\left[\text{In this question you may use the fact that } \int_0^{\infty} \sqrt{x} e^{-x} dx = \frac{\sqrt{\pi}}{2}. \right]$$

5. In each of the following if there exists a function f that satisfies the given condition, give an example of such a function; otherwise just write DOES NOT EXIST inside the box. No explanation is required. No partial credit will be given.

a. f is differentiable on $(-\infty, \infty)$, f has at least two distinct zeros and f' has no zeros.

$$f(x) =$$

b. f is differentiable on $(-\infty, \infty)$, f has no zeros and f' has at least two distinct zeros.

$$f(x) =$$

c. f is continuous on $[0, \infty)$, $\int_0^{\infty} f(x) dx = \infty$ and $\int_0^{\infty} f(x)^2 dx = 1$.

$$f(x) =$$

d. f is differentiable on $(-\infty, \infty)$, $f'(x) > 0$ for all x and $\lim_{x \rightarrow \infty} f(x) \neq \infty$.

$$f(x) =$$

Fall 2010 Midterm II

1. Evaluate the following integrals.

a. $\int \frac{x^2}{x^3 - 1} dx$

b. $\int_0^{2\pi} \sqrt{1 - \cos 2x} dx$

2a. Let f be a differentiable function satisfying

$$\int_2^x f(t) dt = \sin(f(x)) - \frac{1}{2}$$

for all x in an open interval containing 2. Find $f'(a)$ if $f(a) = \frac{\pi}{3}$.

2b. Evaluate the limit $\lim_{n \rightarrow \infty} \sum_{k=1}^n \frac{n}{n^2 + k^2}$.

3. Let R be the region lying between the curve $y = \frac{e^x}{x}$ and the line $y = x$ for $1 \leq x \leq 2$.

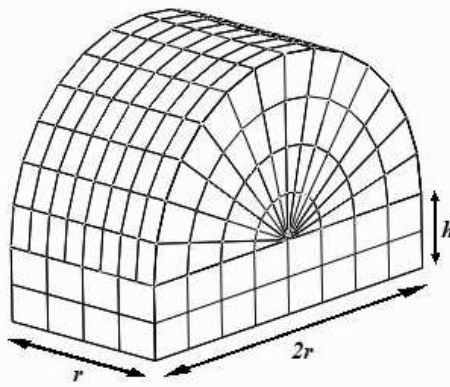
a. Show that $\frac{e^x}{x} \geq x$ for $1 \leq x \leq 2$.

b. Express the volume V of the solid generated by revolving the region R about the x -axis. (*Do not compute!*)

c. Express the volume W of the solid generated by revolving the region R about the y -axis. (*Do not compute!*)

d. Compute either $\square V$ or $\square W$. (Indicate the one you choose by putting a \mathbf{X} in the square in front of it.)

4. We want to build a greenhouse that has a half cylinder roof of radius r and height r mounted horizontally on top of four rectangular walls of height h as shown in the figure. We have $200\pi \text{ m}^2$ of plastic sheet to be used in the construction of this structure. Find the value of r for the greenhouse with the largest possible volume we can build.



5. In each of the following if there exists a function f that is defined and differentiable on the entire real line and that satisfies the given condition, give an example of such a function; otherwise just write DOES NOT EXIST inside the box. No further explanation is required. No partial credit will be given.

- a. f has exactly one local maximum, exactly two zeros, and no local minimums.

$$f(x) =$$

- b. f has exactly one local maximum, no zeros, and no local minimums.

$$f(x) =$$

- c. f has no local maximums, no zeros, and no local minimums.

$$f(x) =$$

- d. f has exactly one local maximum, exactly three zeros, and exactly one local minimum.

$$f(x) =$$

Fall 2010 Final

1a. Find the equation of the tangent line to the curve $y = x^2 2^x$ at $x = 1$.

1b. Evaluate the limit $\lim_{x \rightarrow \pi/4} (\tan x)^{\tan 2x}$.

2. Evaluate the following integrals.

a. $\int \frac{dx}{x - \sqrt[3]{x}}$

b. $\int_0^1 \frac{x^2}{\sqrt{1-x^2}} dx$

3a. Let $A = \int_0^{\infty} e^{-x^2} dx$. Express the value of the improper integral $\int_0^{\infty} x^2 e^{-x^2} dx$ in terms of A .

3b. Find all real numbers x that satisfy the equality $x + x^3 + x^5 + \dots = -1$.

4. Consider the sequence satisfying the conditions $a_1 = 2$ and $a_n = a_{n-1} - \frac{1}{a_{n-1}}$ for $n \geq 2$.

a. Compute a_2, a_3, a_4 .

b. Exactly one of the following statements is true. Choose the true statement and mark the box in front of it with a \checkmark .

The sequence $\{a_n\}$ converges.

The sequence $\{a_n\}$ diverges.

c. Prove the statement you chose in part **(b)**.

5. In each of the following indicate whether the given series converges or diverges, and also indicate the *best* way of determining this by marking the corresponding boxes with a \mathbf{X} and filling in the corresponding blank.

a. $\sum_{n=2}^{\infty} \frac{n}{\sqrt{n^5 - 1}}$ converges diverges

p -series with $p = \underline{\hspace{2cm}}$ Direct Comparison Test with $\sum \underline{\hspace{2cm}}$

geometric series with $r = \underline{\hspace{2cm}}$ Limit Comparison Test with $\sum \underline{\hspace{2cm}}$

n th Term Test Ratio Test

Integral Test Root Test

b. $\sum_{n=1}^{\infty} \sin^2\left(\frac{1}{n}\right) \sin^2 n$ converges diverges

p -series with $p = \underline{\hspace{2cm}}$ Direct Comparison Test with $\sum \underline{\hspace{2cm}}$

geometric series with $r = \underline{\hspace{2cm}}$ Limit Comparison Test with $\sum \underline{\hspace{2cm}}$

n th Term Test Ratio Test

Integral Test Root Test

c. $\sum_{n=1}^{\infty} \left(\frac{n-2}{n}\right)^n$ converges diverges

p -series with $p = \underline{\hspace{2cm}}$ Direct Comparison Test with $\sum \underline{\hspace{2cm}}$

geometric series with $r = \underline{\hspace{2cm}}$ Limit Comparison Test with $\sum \underline{\hspace{2cm}}$

n th Term Test Ratio Test

Integral Test Root Test

d. $\sum_{n=1}^{\infty} \frac{n^3}{\left(2 - \frac{\sin n}{n}\right)^n}$ converges diverges

p -series with $p = \underline{\hspace{2cm}}$ Direct Comparison Test with $\sum \underline{\hspace{2cm}}$

geometric series with $r = \underline{\hspace{2cm}}$ Limit Comparison Test with $\sum \underline{\hspace{2cm}}$

n th Term Test Ratio Test

Integral Test Root Test

Fall 2009 Midterm I

1. Consider the function

$$f(x) = \begin{cases} \frac{\sqrt{1+x}-1}{x} & \text{if } x \neq 0 \\ k & \text{if } x = 0 \end{cases}$$

where k is a constant.

a. Determine the value of the constant k for which f is continuous at 0.

b. Write the limit defining $f'(0)$. (*Do not compute.*)

2a. Evaluate the limit $\lim_{x \rightarrow 0} \frac{5 - 6 \cos x + \cos^2 x}{x \sin x}$. (*Do not use L'Hôpital's Rule.*)

2b. Evaluate the limit $\lim_{x \rightarrow 1} \frac{x^5 + x^3 - 2}{x^3 + x^2 - 2}$. (*Do not use L'Hôpital's Rule.*)

3. Consider a point P moving along the x -axis, and let Q be a point moving on the curve $y = x^2$ such that the line PQ is normal to the curve $y = x^2$ at the point Q at all times. Determine the rate of change of the x -coordinate of the point Q at the moment when P is at $(3, 0)$ and the x -coordinate of P is increasing at a rate of 1 cm/sec.

4a. Let f be a differentiable function and $g(x) = (f(f(x^3) + x))^2$. If $f(1) = 1$, $f(2) = 5$, $f'(1) = -3$, and $g'(1) = 2$, find $f'(2)$.

4b. If $y = \frac{\sin(x^2)}{x^3}$, find $\left. \frac{dy}{dx} \right|_{x=\sqrt{\pi/2}}$.

5a. Is there a continuous function f on $(0, \infty)$ such that $f(2x)f(x) < 0$ for all $x > 0$? If YES, give an example; if NO, prove that no such function exists.

5b. Is there a continuous function f on $(0, \infty)$ such that $\lim_{x \rightarrow \infty} f(x)$ does not exist, but $\lim_{x \rightarrow \infty} (f(x+1) - f(x))$ exists? If YES, give an example; if NO, prove that no such function exists.

Fall 2009 Midterm II

1. A function f that is continuous on the entire real line and differentiable for $x \neq 0$ satisfies the following conditions: **i.** $f(0) = 0$; **ii.** $f(1) = 1$; **iii.** $f'(x) < 0$ for $x < 0$, $f'(x) > 0$ for $0 < x < 1$, and $f'(x) < 0$ for $x > 1$; **iv.** $f''(x) < 0$ for $x \neq 0$.

a. Sketch the graph of $y = f(x)$.

b. Give an example of a function in the form $f(x) = ax^b + cx^d$, where a, b, c, d are constants, that satisfies the conditions (**i-iv**). (You do not need to explain how you found the example, but you have to verify that your example satisfies the conditions.)

2. Find the maximum possible total surface area of a cylinder inscribed in a hemisphere of radius 1.

3. Evaluate the limit $\lim_{x \rightarrow 0^+} \frac{\sin x + 2 \cos \sqrt{x} - 2}{x^2}$.

4a. If $f(x) = x^2 \int_0^x \sin\left(\frac{\pi}{t^2 + 1}\right) dt$, express $f'(1)$ in terms of $A = f(1)$.

4b. Find $y(1)$ if y is a differentiable function of x such that $\frac{dy}{dx} = xy^2$ and $y(0) = 1$.

5. Evaluate the following integrals.

a. $\int_1^2 \sqrt[3]{\frac{2-x}{x^7}} dx$

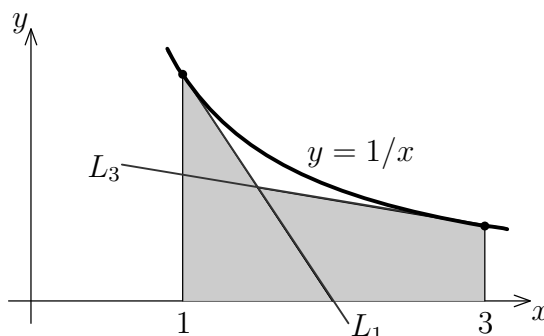
b. $\int \frac{\sin^2 \sqrt{x} \cos \sqrt{x}}{\sqrt{x}} dx$

1. Consider the region bounded by the curve $y = \sin(kx)$ and the x -axis for $0 \leq x \leq \pi/k$, where k is a positive constant. Let V be the volume of the solid generated by revolving this region about the x -axis, and W be the volume of the solid generated by revolving this region about the y -axis. Find all values of k for which $V = W$.

2a. Let $a > 0$ be a constant. Show that $\frac{1}{x} \geq -\frac{1}{a^2}(x - a) + \frac{1}{a}$ for all $x > 0$.

2b. Express in one sentence what the inequality in part (a) means in geometric terms.

2c. In the figure, the line L_1 and the line L_3 are tangent to the graph of $y = 1/x$ at the points $(1, 1)$ and $(3, 1/3)$, respectively. Compute the area of the shaded region.



2d. Explain in one sentence why part (c) implies that $3 > e$.

3. Evaluate the following limits:

a. $\lim_{x \rightarrow 0^+} (e^x - 1)^{1/\ln x}$

b. $\lim_{n \rightarrow \infty} \sum_{k=1}^n \frac{1}{(en + k)(\ln(en + k) - \ln n)}$

4a. Express the value of the integral $\int_0^1 \frac{\ln x}{x^2 + 1} dx$ in terms of $A = \int_1^\infty \frac{\ln x}{x^2 + 1} dx$.

4b. Express the value of the integral $\int_0^1 \frac{\ln x}{x^2 + 1} dx$ in terms of $B = \int_0^1 \frac{\arctan x}{x} dx$.

5. In each of the following if there exists a function f that satisfies the given conditions, give an example of such a function; otherwise just write DOES NOT EXIST. No further explanation is required. No partial credit will be given.

a. f is differentiable on $(-\infty, \infty)$, and $f'(x) > f(x) > 0$ for all x .

b. f is differentiable on $(0, \infty)$, $f(2x) = -f(x)$ for all $x > 0$, and $f(3) \neq 0$.

c. f'' is continuous on $[0, 1]$, $\int_0^1 (f'(x))^2 dx = 1$, and $\int_0^1 f(x)f''(x) dx = -1$.

d. $f'(0)$ exists, but f is not continuous at $x = 0$.

Fall 2008 Midterm I

1. Evaluate the following limits: (*Do not use L'Hôpital's Rule.*)

a. $\lim_{x \rightarrow 9} \frac{\sqrt{x} - 3}{x^3 - 82x + 9}$

b. $\lim_{x \rightarrow 2} \frac{1 + \sin(3\pi/x)}{(x - 2)^2}$

2. Consider the limit $\lim_{x \rightarrow 2} \frac{x \ln(x) - 2 \ln(2)}{x - 2}$.

a. Interpret this limit as the derivative $f'(a)$ of a function $f(x)$ at a point $x = a$.

b. Compute the limit using the interpretation in part (a).

3. Suppose that $f(1) = 1$, $f'(1) = 2$, $f''(1) = -5$, and that y is a differentiable function satisfying the equation $f(y^2x) = 2yf(x) - 1$. Find $\left. \frac{d^2y}{dx^2} \right|_{(x,y)=(1,1)}$.

4a. A differentiable parametric curve $x = f(t)$, $y = g(t)$ satisfies $\frac{dy}{dx} = \sqrt{t^2 + 1} \cos(\pi t)$. If $\left. \frac{d^2y}{dx^2} \right|_{t=3/4} = 2$, find $\left. \frac{dy}{dt} \right|_{t=3/4}$.

4b. Show that there is a real number c such that the tangent line to the graph of $u(x) = x^3 - x$ at the point $(c, u(c))$ and the tangent line to the graph of $v(x) = e^{-x^2}$ at the point $(c, v(c))$ are perpendicular to each other.

5. In each of the following if there exists a function f whose domain is the entire real line and that satisfies the given condition, give an example of such a function; otherwise just write DOES NOT EXIST inside the box. No further explanation is required.

a. $\lim_{x \rightarrow 0} xf(x) = 0$ and $\lim_{x \rightarrow 0} f(x) = \infty$.

b. $\lim_{x \rightarrow \infty} f(x) = 0$, but $\lim_{x \rightarrow 0} f(1/x)$ does not exist.

c. $\lim_{h \rightarrow 0} \frac{f(h) - f(-h)}{h}$ exists, but $f'(0)$ does not exist.

d. $f'(0)$ exists, but f is not continuous at $x = 0$.

e. $f(x)f'(x) < 0$ for all x .

Fall 2008 Midterm II

1. Evaluate the following limits:

a. $\lim_{x \rightarrow 0} \frac{\cos^2(x) - \cos(\sqrt{2}x)}{x^4}$

b. $\lim_{x \rightarrow \infty} \left(\frac{2}{\pi} \arctan x \right)^x$

2a. One morning of a day when the sun will pass directly overhead, the shadow of an 40-m building is 30 m long. At the moment in question, the angle the sun makes with the ground is increasing at the rate of $0.27^\circ/\text{min}$. At what rate and how is the length of the shadow changing?

2b. Find $y(x)$ if $\frac{dy}{dx} = e^x - e^{-x}$ and $y(0) = 0$.

3. Sketch the graph of the function $y = e^{-x/2}(x^2 + 4x + 3)$ by computing y' and y'' , and determining their signs; finding the critical points, the inflections points, the intercepts, and the asymptotes; and clearly labeling them in the picture.

4. A hangar consisting of two quarter-spheres joined by a half-cylinder, and having a volume of $2000\pi/3 \text{ m}^3$ will be designed. If the construction cost for the unit area of the spherical parts is $3/4$ of the construction cost of the unit area of the cylindrical part, find the dimensions of the least expensive hangar that can be built.

5. Determine the number of solutions of the equation $e^x = kx$ for each value of the positive constant k .

Fall 2008 Final

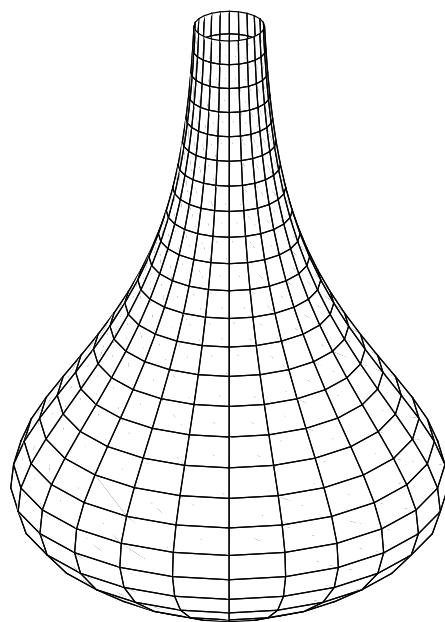
1. Show that $x \geq \ln(1+x) \geq \frac{x}{1+x}$ for all $x > -1$.

2. Evaluate the following limits.

a. $\lim_{x \rightarrow 0} \frac{x^3 - \sin^3 x}{\sin(x^5)}$

b. $\lim_{n \rightarrow \infty} \sum_{k=1}^n \frac{2k-1}{(2k-1)^2 + n^2}$

3a. The radius of a vase at a height of h cm from its base is $r(h) = \frac{1}{2}(h+3)^2 e^{-h/5} + 2$ cm. If the water is running into the vase at a rate of $150 \text{ cm}^3/\text{sec}$, how fast is the level of water changing at the moment when it is 10 cm deep?



3b. Find the area of the surface generated by revolving the curve $y = \sqrt{x}$, $0 \leq x \leq 1$, about the x -axis.

4a. Evaluate the integral $\int_0^{\pi/3} \frac{\sin x \, dx}{2 \sin^2 x + 3 \cos x}$.

4b. Evaluate the integral $\int_0^1 x(f(x)f''(x) + (f'(x))^2) \, dx$ if $f(0) = 3$, $f'(0) = -5$, $f''(0) = 2$, $f(1) = 7$, $f'(1) = 4$, $f''(1) = -1$.

5a. Show that the improper integral $\int_1^{\infty} e^{-a(x+\frac{1}{x})} \, dx$ converges for all positive values of the constant a .

5b. Show that $\int_1^{\infty} e^{-a(x+\frac{1}{x})} \, dx = \frac{e^{-2a}}{a} + \int_0^1 e^{-a(x+\frac{1}{x})} \, dx$ for all $a > 0$.

Fall 2007 Midterm I

1. Define the function f as below

$$f(x) = \begin{cases} \frac{\cos x - 1}{x} & \text{for } x \neq 0, \\ 0 & \text{for } x = 0. \end{cases}$$

a. Is the function f continuous at $x = 0$? (*Don't use L'Hôpital's rule.*)

b. Find $f'(0)$ if it exists. (*Don't use L'Hôpital's rule.*)

2a. Define $g(x) = x^2 - \cos x$. Show that there exists a number c in $(0, \pi/2)$ such that $g(c) = -1/2$.

2b. Show that the function $p(x) = x^3 - 3x + 1$ has all its three roots in $[-2, 2]$.

3a. Let a , b and c be constants. Define

$$f(x) = \begin{cases} \cos x & \text{for } x \leq 0, \\ a + bx + cx^2 & \text{for } x > 0. \end{cases}$$

Find a , b , c so that $f'''(0)$ (the third derivative of f at $x = 0$) exists. Does $f^{(4)}(0)$ (the fourth derivative of f at $x = 0$) exist?

3b. Find the horizontal and vertical asymptotes of the curve

$$y = \frac{3x^2 - 1 + 2 \sin x}{x^2 - 1}.$$

4. Let f be a differentiable function on $(-5, 10)$. Assume

$$f\left(\frac{5}{2}\right) = 10, \quad f\left(\frac{3}{2}\right) = 0, \quad \text{and} \quad f'\left(\frac{3}{2}\right) = 3.$$

a. Find $\lim_{x \rightarrow 3} \left(3 + f\left(x - \frac{1}{2}\right)\right)$. (Explain!)

b. Find $\lim_{x \rightarrow 1} \frac{f\left(x + \frac{1}{2}\right)}{x - 1}$. (Explain!)

5a. Let a curve C be defined through the equation $x + \sin(xy) = y$. Find an equation of the tangent line and an equation of the normal line of C at the point $(0, 0)$.

5b. If one perpendicular side of a right triangle decreases at 1 cm/min and the other perpendicular side increases at 2 cm/min then how fast is the length of the hypotenuse changing at the time where the first perpendicular side is 8 cm and the other one is 4 cm long?

Fall 2007 Midterm II

1a. Evaluate $\lim_{x \rightarrow 0} \frac{1}{\sin x} \int_0^{\sin 2x} \cos 5t \, dt$.

1b. A hallway of width 4 ft meets a hallway of width $12\sqrt{3}$ ft at a right angle. Find the length of the longest ladder that can be carried horizontally around the corner from one hallway to the other hallway. (*i.* While solving this problem, to find the global extrema of a function that is not defined on a closed interval you have to use the first derivative test or the second derivative test.) (*ii.* Find the exact answer.)

2. Define a function f as follows

$$f(x) = \frac{x^2}{x^2 - 4}.$$

You have to explicitly write the answer to each part.

a. Find the domain of the function f .

b. Find all asymptotes, the x -intercept(s) and the y -intercept(s) of the graph of f .

c. Find $f'(x)$ and $f''(x)$.

d. Find the intervals on which the function f is increasing and decreasing. Identify the function's local extreme values, if any, saying where they are taken on.

e. Find where the graph of f is concave up and where it is concave down. Are there any inflection points on the graph of f ?

f. Sketch the graph of f .

3a. Calculate the following limit $\lim_{n \rightarrow \infty} \frac{1}{n^3} \sum_{i=1}^n i^2 \sin \left(5 + \frac{\pi i^3}{n^3} \right)$.

3b. Calculate $\int \frac{\sin 2x}{3 + 2 \cos^2 x} dx$.

4. Let f be a continuous function on $[2, 5]$. Assume that

$$f(7 - x) = f(x) \neq 0$$

for all x in $[2, 5]$ and

$$\int_4^5 f(u) du = 26.$$

We define

$$F(x) = \int_4^x f(u) du \quad \text{and} \quad G(x) = \int_3^x f(u) du$$

for all x in $[2, 5]$.

a. Show that G is an increasing function on $[2, 5]$.

b. Show that there exists only one number c in the interval $[2, 5]$ such that $F(c) = 0$.

c. Calculate $F(2) + G(4)$.

5a. Find the volume of the solid generated by revolving the region bounded by the curves $x = \ln y$, $y = e^{2x}$, and $x = \ln 2$ about the x -axis.

5b. Find the surface area of the solid generated by revolving the curve $y = \sqrt{2x - x^2}$ for $1 \leq x \leq 3/2$.

1a. Is there any real number that is one less than its cube? Explain and support your answer with well known theorems.

1b. Prove that $\left|xe^{-x^2} + \cos x - \sin x\right| < \frac{1 + 2\sqrt{2}}{2}$ for all x in $(-\infty, \infty)$.

2a. Show that $\int_0^{\pi/2} \sin^{2n} x \, dx = \frac{2n-1}{2n} \int_0^{\pi/2} \sin^{2n-2} x \, dx$ where n is a positive integer.

2b. Show that $\int_0^{\pi/2} \sin^6 x \, dx = \frac{1 \cdot 3 \cdot 5 \pi}{2 \cdot 4 \cdot 6 \cdot 2} = \frac{5\pi}{32}$.

2c. Show that $\int_0^{\pi/2} \sin^{2n} x \, dx = \frac{1 \cdot 3 \cdot 5 \cdots (2n-1) \pi}{2 \cdot 4 \cdot 6 \cdots (2n)} \frac{\pi}{2}$ (for any integer $n > 0$).

3a. Find $\lim_{x \rightarrow \infty} \left(\frac{x+a}{x-a}\right)^x$ where a is a nonzero real number.

3b. Find $\lim_{n \rightarrow \infty} \frac{1}{n^{r+1}} \sum_{k=1}^n k^r$ where r is a real number greater than 1.

3c. Find $\lim_{n \rightarrow \infty} \frac{1}{n^{r+2}} \sum_{k=1}^n k^r$ where r is a real number greater than 1.

4. Evaluate the following integrals.

a. $\int_{\sqrt{e}}^e \frac{\sin^{-1}(\ln x)}{x} \, dx$

b. $\int \frac{x-1}{x(x+1)^2} \, dx$

c. $\int_{-\infty}^0 2^{3x} \, dx$

5a. Show that the linearization $L(x)$ of e^x about $x = 0$ is $L(x) = x + 1$.

5b. Let $L(x)$ be the linearization of a function f at $x = 2$. Assume that the function f'' is continuous on $(1, 4)$ and the graph of $y = f(x)$ is concave up on $(0, 5)$. Define a function h as follows: $h(x) = f(x) - L(x)$ for all x in $(1, 3)$.

i. Identify the intervals on which h is increasing and decreasing.

ii. Determine the concavity of graph $y = h(x)$.

iii. Find, if any, absolute extreme values of the function h .

1. Evaluate the following limits. (*Do not use L'Hôpital's Rule.*)

a. $\lim_{x \rightarrow 1} \frac{x^2 - 4x + 3}{\sqrt{x} - 1}$

b. $\lim_{x \rightarrow \infty} \left((x + 2) \sin\left(\frac{2}{x + 1}\right) \right)$

2a. Find the equations of the tangent lines to the curve $y = 2x^3 - 3x^2 - 12x + 20$ which are perpendicular to the line $y = 1 - x/24$.

2b. Find $\frac{d^2y}{dx^2}$ at $t = \frac{\pi}{3}$ if $x = t - \sin t$ and $y = 1 - \cos t$.

3a. Evaluate $g'(0)$ and $g''(0)$ if $g(x) = \sec(x^2 + 5x)$.

3b. If $f(1) = -3$, $f'(1) = 4$ and if $y = f(xy^2 + f(x^2)) + 5$ defines y as a differentiable function of x , determine $\frac{dy}{dx}$ at the point $(x, y) = (1, 2)$.

4. In each of the following if there exists a function f whose domain is the entire real line and which satisfies the given condition, then give an example of such a function; otherwise just write DOES NOT EXIST inside the box. No further explanation is required.

a. $f(x)$ is not continuous at $x = 4$, but $(f(\sqrt{x}))^2$ is continuous at $x = 4$.

b. $f(x)$ is not continuous at $x = 1$, but $(f(x))^2$ is continuous at $x = 1$.

c. $\lim_{x \rightarrow 0} f(x)$ does not exist, but $\lim_{x \rightarrow 0} f(x^2)$ exists.

d. $\lim_{x \rightarrow 0} \frac{f(x) - f(0)}{x}$ exists, but f is not differentiable at 0.

e. f is continuous and $f(x)f(x+1) < 0$ for all x .

5. For each of the following functions determine if there is a positive constant C such that for all $0 < \varepsilon < 1$ and for all x ,

$$|x| < C\varepsilon \implies |f(x)| < \varepsilon.$$

In particular, if such C exists, find one; if such C does not exist, explain why not.

a. $f(x) = x^2 + 5x$

b. $f(x) = x^{1/3}$

Fall 2006 Midterm II

1a. Evaluate the integral $\int_0^1 t \sin^2(\pi(t^2 + 1)) dt$.

1b. Find the area of the region enclosed by the curves $y = 2x^3 - x^2 - 5x$ and $y = x^2 - x$.

2a. Evaluate the limit $\lim_{n \rightarrow \infty} \sum_{k=1}^n \frac{n^2}{(n+k)^3}$.

2b. Show that the equation $x^5 + x^3 - 3x^2 + 3x + 7 = 0$ has exactly one real root.

3a. Let $f(x) = \frac{1}{x} \int_0^x \sin(t^2) dt$ for $x > 0$. If $A = f(\sqrt{\pi/2})$, express $f'(\sqrt{\pi/2})$ in terms of A .

3b. Show that if g is a twice differentiable function such that $g(0) = 1$, $g'(0) = -1$, $g(1) = 2$, $g'(1) = 5$, and $g''(x) \geq 0$ for all x , then $g(x) \geq 1/3$ for all $0 \leq x \leq 1$.

4. Find the smallest possible total surface area for a cone circumscribed about a sphere of radius R .

5. Sketch the graph of $y = \frac{x^3}{x^2 - 1}$ by finding y' , y'' ; determining their signs; finding and classifying the critical points, the inflection points and the intercepts; and finding the asymptotes.

Fall 2006 Final

1. Evaluate the following integrals.

a. $\int \frac{1 + e^x}{1 - e^x} dx$

b. $\int \frac{dx}{x^2 \sqrt{x^2 + 4}}$

2. Evaluate the following integrals.

a. $\int_{-1/2}^{1/2} \frac{dt}{t + \sqrt{1 - t^2}}$

b. $\int_{-1/2}^{1/2} \sqrt{\frac{1-x}{1+x}} \arcsin x dx$

3. Consider the region bounded by the parabolas $y = 4x - x^2$ and $y = x^2 - 8x + 12$. Express the following volumes in terms of definite integrals, but do not evaluate.

a. The volume of the solid generated by revolving this region about the y -axis.

b. The volume of the solid generated by revolving this region about the x -axis.

4a. Express $\int_0^1 x^2 f''(x) dx$ in terms of $k = \int_0^1 f(x) dx$ if $f'(1) = 2f(1)$ and f'' is continuous.

4b. Prove that $\frac{\pi}{6} < \int_0^1 \frac{dx}{\sqrt{4-x^2-x^3}} < \frac{\pi}{4\sqrt{2}}$.

5a. Find constants A and B such that the limit $\lim_{x \rightarrow \infty} x^3 \left(A + \frac{B}{x} + \arctan x \right)$ exists.

5b. Let $f(x) = x^{1/x}$ for $x > 0$. Find the absolute maximum value of f .

Fall 2005 Midterm I

1. Evaluate the following limits:

a. $\lim_{x \rightarrow \infty} (\sqrt[3]{x^3 + x^2} - x)$

b. $\lim_{x \rightarrow 5/2} \frac{\cos \pi x}{8x^3 - 16x^2 - 25}$

2. Assume that $\lim_{x \rightarrow 0^+} f(x) = A$ and $\lim_{x \rightarrow 0^-} f(x) = B$ where A and B are real numbers. In each of the following, if possible, express the limit in terms of A and B ; otherwise, write CANNOT BE DONE in the box. No further explanation is required.

a. $\lim_{x \rightarrow 0^+} f(x^2 - x)$

b. $\lim_{x \rightarrow 0^-} f(x^2 - x)$

c. $\lim_{x \rightarrow 0^-} (f(x^2) - f(x))$

d. $\lim_{x \rightarrow \infty} f((x^2 - x)^{-1})$

e. $\lim_{x \rightarrow \infty} f(x^{-2} - x^{-1})$

f. $\lim_{x \rightarrow 1^-} f(x^{-2} - x^{-1})$

3a. Let f be a differentiable function such that $f(1) = 1$ and the slope of the tangent line to the curve $y = f(xf(xy))^2$ at the point $(1, 1)$ is 3. Find all possible values of $f'(1)$.

3b. Show that if u is differentiable at 0, then the limit

$$\lim_{t \rightarrow 0} \frac{u(3t) - u(-2t)}{t}$$

exists.

4a. The angle of elevation from a point 3 m away from the base of a flag pole to its top is $60^\circ \pm 1^\circ$. Estimate the error in the height of the pole calculated from this measurement.

4b. Suppose that a drop of mist is a perfect sphere and that, through condensation, the drop picks up moisture at a rate proportional to its surface area. Show that under these circumstances the drop's radius increases at a constant rate.

5. Consider the function $f(x) = x^{4/3} - x - x^{1/3}$.

a. Find the absolute maximum value and the absolute minimum value of f on the interval $[-1, 6]$.

b. Determine the number of solutions of the equation $f(x) = 0$.

Fall 2005 Midterm II

1. Find the closest point on the curve $y = x^2$ to the point $(0, 1)$

2. Evaluate the limit: $\lim_{x \rightarrow 0} \frac{x \int_0^x \sin(t^2) dt}{\sin(x^4)}$.

3. Let a be a positive constant. Consider the region bounded by the parabola $y = a(x - x^2)$ and the x -axis in the first quadrant. Let V be the volume of the solid generated by revolving this region about the x -axis. Let W be the volume of the solid generated by revolving this region about the y -axis. Find all values of a for which $V = W$.

4. Evaluate the following integrals:

a. $\int_0^1 x^5 \sqrt{x^3 + 1} dx$

b. $\int \tan^2 x dx$

5a. True or false? No explanation is required.

$$\int x^2 dx = \frac{x^3}{3} + C \quad \text{True } \square \quad \text{False } \square$$

$$\int (5x - 7)^2 dx = \frac{(5x - 7)^3}{3 \cdot 5} + C \quad \text{True } \square \quad \text{False } \square$$

$$\int \sin^2 x dx = \frac{\sin^3 x}{3 \cos x} + C \quad \text{True } \square \quad \text{False } \square$$

5b. Determine all differentiable functions f which satisfy

$$\int (f(x))^2 dx = \frac{(f(x))^3}{3f'(x)} + C .$$

Fall 2005 Final

1. Find y' . (*Do not simplify!*)

a. $y = (x^2 + 1)(x^3 + 1)$

b. $y = \frac{x^2 + 1}{x^3 + 1}$

2. Evaluate the following limits:

a. $\lim_{x \rightarrow \infty} x(2^{1/x} - 1)$

b. $\lim_{x \rightarrow 0} (\cos x)^{1/x^2}$

3. Evaluate the following integrals:

a. $\int_0^1 \arctan x dx$

b. $\int_0^{\pi/4} \tan^5 x \sec^4 x dx$

4. Sketch the graph of $y = \frac{\ln x}{x}$ by finding y' , y'' , determining their signs, finding and classifying the critical points, the inflection points and the intercepts, and finding the asymptotes.

5. Assume that as an ice cube melts it retains its cubical shape, and its volume decreases at a rate that is proportional to its surface area. If the cube loses $1/4$ of its volume during the first hour, how long will it take for the entire ice cube to melt?

Fall 2004 Midterm I

1. Evaluate the following limits: (*Do not use L'Hôpital's Rule.*)

a. $\lim_{x \rightarrow 5} \frac{x^3 - 24x - 5}{x^3 - 2x^2 - 75}$

b. $\lim_{x \rightarrow 8} \frac{1 - \cos(x^{1/3} - 2)}{(x - 8)^2}$

2. Find d^2y/dx^2 at the point $(x, y) = (1, -1)$ if y is a differentiable function of x satisfying

$$y^3 + x^2y + x = x^3 + 2y.$$

3a. Show that $\lim_{x \rightarrow 3} \frac{1}{x-1} = \frac{1}{2}$ using the ε - δ definition of the limit.

3b. Suppose that for all $0 < \varepsilon < 1$,

$$|x - 1| < \frac{\varepsilon^2}{4} \implies |f(x) - 3| < \varepsilon$$

and

$$|x - 1| < \frac{\varepsilon}{35} \implies |g(x) - 4| < \varepsilon.$$

Find a real number $\delta > 0$ such that

$$|x - 1| < \delta \implies |f(x) + g(x) - 7| < \frac{1}{5}.$$

4a. Show that the equation $x^4 + 1 = 7x^3$ has at least 2 real roots.

4b. Find $\frac{dy}{dx}$ if $y = \sin^7(\cos(x^5))$.

5. In each of the following if there exists a function f whose domain is the entire real line and which satisfies the given condition, then give an example of such a function; otherwise just write DOES NOT EXIST. No further explanation is required.

a. $\lim_{x \rightarrow 1} f\left(\frac{x-1}{x+1}\right) \neq f(0)$

b. $y = f(x)$ is not differentiable at $x = -1$, but $y = (f(x))^2$ is differentiable at $x = -1$.

c. $y = f(x)$ is not continuous at $x = 5$, but it is differentiable at $x = 5$.

d. $\lim_{x \rightarrow 0} f(x) = 2$ and $f(0.0000000000000001) = -1$.

e. $f(2) = 3$, $f(4) = -1$ and $f(x) \neq 0$ for all x .

Fall 2004 Midterm II

1. Sketch the graph of $y = x^3 - 6x^2 + 5$ by computing y' and y'' , determining their signs, finding the local extreme points, the inflection points and the intercepts.

2a. Let $x = \int_{1/2}^y \frac{dt}{\sqrt{t-t^3}}$. Find $\frac{dy}{dx}$ at a point where $\frac{d^2y}{dx^2} = 0$.

2b. A ball of radius 5 cm is dropped directly under a light bulb which is 3 m above the floor. If at the moment the ball is 35 cm away from the bulb it is moving at a speed of 2 m/sec, how fast is the radius of the shadow of the ball on the floor changing?

3. Evaluate the following integrals:

a. $\int_3^4 \sqrt{x^4 - 4x^3 + 4x^2 - 1} dx$

b. $\int_0^\pi \sin^3 x \cos^2 x dx$

c. $\int x(x+1)^{1/3} dx$

d. $\int \frac{\tan \theta}{\sqrt{\sec \theta}} d\theta$

4. A cylinder is drawn inside a sphere of radius 1. Find the maximum possible area of the cylinder.

5a. Find f if $f''(x) = 1$ for all x , $f(0) = 1$ and $f(2) = 2$.

5b. Show that if $g''(x) \leq 0$ for all x , $g(0) = 0$ and $g(2) = 0$, then $g(x) \geq 0$ for all $0 \leq x \leq 2$.

5c. Show that if $h''(x) \leq 1$ for all x , $h(0) = 1$ and $h(2) = 2$, then $h(x) \geq \frac{7}{8}$ for all $0 \leq x \leq 2$.

Fall 2004 Final

1. Evaluate the following integrals.

a. $\int_{-\ln 2}^0 \frac{dx}{e^x - 2e^{-x} - 1}$

b. $\int x \tan^2 x dx$

2. Evaluate the following integrals:

b. $\int_{-\pi/2}^{\pi/2} \frac{dx}{\sin x - 2 \cos x + 3}$

b. $\int \sqrt{1 + e^x} dx$

3a. Find the linearization of $f(x) = \arcsin x = \sin^{-1} x$ centered at $x = 1/2$.

3b. Evaluate the limit $\lim_{x \rightarrow 0} \left(\frac{(1+x)^{1/x}}{e} \right)^{1/x}$.

4. A solid cylinder whose axis is the x -axis intersects another solid cylinder whose axis is the y -axis. Both cylinders have radius 2 units. Find the volume of the part of the intersection that lies in the first octant.

5. Suppose that the function f is continuous, increasing and $f(x) \geq 0$ on $[0, \infty)$.

a. Write down an integral expressing the volume $V(a)$ of the solid generated by revolving the region between the graph $y = f(x)$ and the x -axis for $0 \leq x \leq a$ about the x -axis where a is a constant.

b. Write down an integral expressing the volume $W(a)$ of the solid generated by revolving the region between the graph $y = f(x)$ and the line $y = f(a)$ for $0 \leq x \leq a$ about the y -axis where a is a constant.

c. Find $f'(3)$ if $V(a) = W(a)$ for all $a \geq 0$ and $f(3) = 2$.

d. Find $f(x)$ for all $x \geq 0$ if $V(a) = W(a)$ for all $a \geq 0$ and $f(3) = 2$.

Fall 2003 Midterm I

1. For a real number t , let L_t be the line passing through the point $(-1, 0)$ with slope t , and let M_t be the line passing through the point $(1, 0)$ and perpendicular to L_t .

a. Find the intersection point P_t of the lines L_t and M_t .

b. Describe the curve traced by P_t for $-\infty < t < \infty$ using Cartesian coordinates.

2. Determine all values of the constant a for which the function $f(x) = e^x + ae^{-x}$ is one-to-one. For these values of a , find $f^{-1}(x)$ and the domain of f^{-1} .

3. Find the following limits:

a.
$$\lim_{h \rightarrow 0} \frac{\frac{1}{(x+h)^2} - \frac{1}{x^2}}{h}$$

b.
$$\lim_{x \rightarrow 9} \frac{x^3 - 729}{x - \sqrt{x} - 6}$$

4a. Find the limit
$$\lim_{x \rightarrow 0^+} \frac{1 - \sqrt{\cos x}}{(1 - \cos \sqrt{x}) \sin x}$$

4b. Prove that if $|f(x)| < 7$ for $0 < |x - 2| < 1$ and $\lim_{x \rightarrow 2} g(x) = 0$, then
$$\lim_{x \rightarrow 2} (f(x)g(x)) = 0$$

5. Show that $\lim_{x \rightarrow 1} (x^2 + x) = 2$ using the ε - δ definition of the limit.

Fall 2003 Midterm II

1. Find the values of h , k and $r > 0$ that make the circle $(x - h)^2 + (y - k)^2 = r^2$ tangent to the parabola $y = x^2 + 1$ at the point $(1, 2)$ and that also make the second derivatives d^2y/dx^2 have the same value on both curves there.

2. A particle moves along the curve $2x^3 + 2y^3 = 9xy$. If the distance of the particle to the origin is increasing at a rate of 3 m/sec at the moment it passes through the point $(2, 1)$, how fast is its x -coordinate changing at this moment?

3a. Find y' if $y = \tan^3(x^2 + \cos(5x))$. (*Do not simplify!*)

3b. Assume that f is continuous on $[0, 2]$ and $f(0) = f(2) = 0$. Show that $f(c + 1) = f(c)$ for some c .

4. A cone is constructed from a disk of radius a by removing a sector AOC of arc length x and then connecting the edges OA and OC . Find the maximum possible volume of the cone.

5. Graph $y = \frac{x - 1}{\sqrt{2x^2 + 1}}$ by computing y' and y'' and determining their signs and the shape of the graph, finding the critical points, the inflection points and the intercepts, and finding the asymptotes.

Fall 2003 Final

1. Find the volume of the solid generated by revolving the region bounded by the curve $y = \ln x$, the x -axis and the line $x = e$ about

a. the x -axis.

b. the y -axis.

2. Evaluate the following integrals:

a. $\int_0^1 \frac{dx}{(x^2 + 1)^2}$

b. $\int \frac{dx}{e^x - e^{-x}}$

3. Evaluate the following limits:

a. $\lim_{x \rightarrow 1} \left(\frac{1}{\ln x} - \frac{1}{x - 1} \right)$

b. $\lim_{x \rightarrow \infty} \left(\frac{2}{\pi} \arctan 3x \right)^x$

4. Find $\frac{dy}{dx}$ at $(x, y) = (1, 2)$ if $x^y + y^x = 3$.

5a. Show that $|\arctan a - \arctan b| \leq |a - b|$ for all a, b .

5b. Find $f''(1)$ if $f(x) = x \int_0^x \frac{t^2}{\sqrt{1+t^4}} dt$.

Fall 2002 Midterm I

1) a) Find $\lim_{x \rightarrow 0^+} \frac{\sqrt{\sin 2x} - \sqrt{\sin x}}{\sqrt{x}}$.

b. Use the ε - δ definition of the limit to show that $\lim_{x \rightarrow 0} (\sin(\sqrt[3]{x}) \sin(1/x)) = 0$.

2. Let f be a differentiable function such that $xf(x) + f(x^2) = 2$ for all $x > 0$.

a. Find $f'(1)$.

b. Show that if $f(x_0) = 0$ for some $x_0 > 1$, then there exists $x_1 > x_0$ such that $f(x_1) = 0$.

3. Find the derivatives of the following functions:

a. $y = \tan^5(\pi x^3)$

b. $y = \sqrt[3]{\frac{x}{x^2 + 1}}$

4. Find y'' at the point $(x, y) = (\pi/2, 0)$ if y is a differentiable function of x satisfying the equation $y^2 = x \cos(x + y)$.

5. Points A and B move along the x - and y -axes, respectively, in such a way that the distance r (meters) along the perpendicular from the origin to the line AB remains constant. How fast is OA changing, and is it increasing, or decreasing, when $OB = 2r$ and B is moving toward O at the rate of $0.3r$ m/sec?

Fall 2002 Midterm II

1. Graph $y = \frac{x^2 - 4}{x + 1}$ by computing y' and y'' and determining their signs and the shape of the graph, finding the critical points, the inflection points and the intercepts, and finding the asymptotes.

2. Consider the area of the region between the parabola $y = x^2$ and the line $y = c$ for $0 \leq x \leq 1$ as a function of c . Find the absolute maximum and the absolute minimum values of this function on the interval $0 \leq c \leq 1$.

3a. Evaluate the limit $\lim_{n \rightarrow \infty} \sum_{k=1}^n \frac{n}{(n+k)^2}$.

3b. Evaluate $y' + y''$ at $x = \pi/4$ if f is a differentiable function with $f'(1/\sqrt{2}) = 4$ and $y = \int_0^{\sin x} f(t) dt$.

4. Evaluate the following integrals:

a. $\int \frac{x^3}{\sqrt{x^2 - 9}} dx$

b. $\int_{\pi^2/36}^{\pi^2/4} \frac{\cos(\sqrt{\theta})}{\sqrt{\theta} \sin^2(\sqrt{\theta})} d\theta$

5. Find the area of the region enclosed by the curves $y^4 = 2y^3 + x$ and $(y-1)^2 = x+1$.

Fall 2002 Final

1. Let c be a positive constant. Find the point on the curve $y = \sqrt{x}$ closest to the point $(c, 0)$.

2. Find the volume generated by revolving the region enclosed by the curves $y = \frac{1}{\sqrt{3+x^2}}$ and $y = \frac{x^2}{2}$ about

a. the x -axis

b. the y -axis

3a. Find $h''(1)$ if $h(x) = (g(x^2))^3$ and $g^{(n)}(1) = n + 1$ for $n \geq 0$.

3b. Find $f'(1)$ if $\int_1^x f(t) dt = x + \ln(f(x))$ for all x .

4. Evaluate the following limits:

a. $\lim_{x \rightarrow \infty} \left(1 + \frac{2}{3x}\right)^x$

b. $\lim_{x \rightarrow 1} \frac{\int_1^x t dt}{x^{x+1} - 1}$

5. Evaluate the following integrals:

a. $\int \frac{(1 + e^x)^2}{1 + e^{2x}} dx$

b. $\int_0^1 \sqrt{\frac{1-x}{1+x}} dx$

Fall 2001 Midterm I

1. Find the following limits: (*Do not use L'Hôpital's Rule.*)

a. $\lim_{x \rightarrow -2} \frac{x^2 + 5x + 6}{x^2 + x - 2}$

b. $\lim_{x \rightarrow 0} \frac{\sqrt{2 - \cos x} - 1}{\sin^2 \pi x}$

2. Find the derivatives of the following functions:

a. $y = \left(\frac{\sin x}{1 + \cos x} \right)^2$

b. $y = \sqrt{x} \sin(\sqrt{x})$

3. Find y'' at the point $(1, 1)$ if y is a differentiable function of x satisfying the equation $x^3 + y^3 = 6xy - 4$.

4. a. Let A and B the points of intersection of the tangent line to the curve $y = 1/x$ at a point $P(x_0, y_0)$ with the y - and x -axes, respectively. Find the length of the line segment AB as a function of x_0 .

b. Suppose that the point P is moving along the curve $y = 1/x$. If at the moment P passes through the point $(2, 1/2)$, the length of the line segment AB is increasing at a rate of 4 mm/sec, how fast is x_0 changing?

5. Graph $y = 4x^3 - x^4$ by computing y' and y'' , finding the critical points and the inflection points, determining the signs of the derivatives, determining the shape of the graph and finding the intercepts.

Fall 2001 Midterm I

1. An 8 feet high wall is 27 feet away from a building. Find the length of the shortest straight beam that will reach to the side of the building from the ground outside the wall.

2. Suppose that u is a continuous function and a is a real constant satisfying

$$\int_0^x u(t) e^{a(t^2-x^2)} dt = \sin x$$

for all x . Find a if $u'(\pi/2) = 5$.

3. Find the volumes of the solids generated by revolving each of the following regions about the x -axis.

a. The region lying between $y = \cos x$ and $y = \sin x$ for $0 \leq x \leq \pi/3$.

b. The region bounded on the left by $x = 3y^2 - 2$, on the right by $x = y^2$, and below by the x -axis.

4. Find the following integrals:

a.
$$\int \frac{x}{\sqrt{1+x^2} + \sqrt{(1+x^2)^3}} dx$$

b.
$$\int_0^{\ln 3} \frac{1}{e^x + 2} dx$$

5. Let $g(x) = x^{-5}$. Find a function f such that $f(1) = 1$ and

$$\frac{d}{dx} (f(x)g(x)) = \frac{d}{dx} (f(x)) \cdot \frac{d}{dx} (g(x))$$

for all $x > 0$.

Fall 2001 Final

1. Find the following limits.

a.
$$\lim_{x \rightarrow 0^+} (\sin(x^2))^{1/\ln x}$$

b.
$$\lim_{x \rightarrow 0} \left(\frac{1}{x^3} \int_0^x \frac{e^{t^4} - e^{-t^4}}{t^2} dt \right)$$

2. Evaluate the following integrals.

a.
$$\int x^2 (\ln x)^2 dx$$

b.
$$\int \frac{1}{(x^2 + 4x + 5)^2} dx$$

3. Evaluate the improper integral
$$\int_2^\infty \frac{x+3}{(x-1)(x^2+1)} dx$$
.

4. Graph the function $f(x) = xe^{-x}$ by finding the intervals on which it is increasing, decreasing, concave up, concave down; its critical points and inflections points, and its asymptotes.

5. Let $f(x) = x^{1/x}$ for $x > 0$.

a. Find the absolute maximum value of $f(x)$.

b. Show that $\sqrt{2} \leq \int_2^3 f(x) dx \leq \sqrt{3}$.

Fall 2000 Midterm I

1. Evaluate the following limits. (*Do not use L'Hôpital's Rule.*)

a. $\lim_{x \rightarrow 0} \frac{x}{\sqrt{1 + \tan 3x} - 1}$

b. $\lim_{x \rightarrow 0} \frac{\sin 4x - 2 \sin 2x}{x^3}$

2. Let

$$f(x) = \begin{cases} 1 + (x - 1) \sin\left(\frac{1}{x - 1}\right) & \text{if } x > 1, \\ |x|/x & \text{if } 0 \neq |x| \leq 1 \\ -1 + \sin\left(\frac{1}{x + 1}\right) & \text{if } x < -1. \end{cases}$$

Determine if each of the following limits exists. Explain your reasoning in detail.

a. $\lim_{x \rightarrow 1} f(x)$

b. $\lim_{x \rightarrow 0} f(x)$

c. $\lim_{x \rightarrow -1} f(x)$

3. Find the equation of the tangent line of the curve $y = \sqrt{x}$ which is perpendicular to the line $2x + 3y = 5$.

4. A particle moves along the curve $y = x^3 + 1$ in such a way that its distance from the origin increases at a rate of 7 units per second. Find the rate of change of the x -coordinate of the particle when it passes through the point $(1, 2)$.

5. Assume that the function f satisfies the equation $f'(x) = f(x/2)$ for all x , and $f(0) = 1$.

a. Show that if $f(x_0) = 0$ for some $x_0 > 0$, then there is x_1 such that $0 < x_1 < x_0$ and $f(x_1) = 0$.

b. Find $f'''(0)$.

6. Graph the function $y = x^{4/3} + 4x^{1/3}$ by computing y' and y'' , determining their signs, and finding the extreme points, the inflection points and x -intercepts.

Fall 2000 Midterm II

1. A wire of length L is bent to form the shape $\square \cap$ where the sides of the square have length a and the radius of the semicircle is r , and then revolved about the line containing the fourth side of the square to sweep out the surface of a sphere and a cylinder. Find r and a which give the maximum surface area.

(1. This question requires no integration: you can use the surface area formulas for these geometric objects. 2. Note that the bottom and the top of the cylinder as well as its side are included in the surface area.)

2. a. Evaluate the limit $\lim_{x \rightarrow 0^+} \int_0^x \frac{1}{(x-t)^4 + x^4} dt$.

b. If $f(x) = \int_2^{\sqrt{x}} \sqrt{9+t^4} dt$, find $f'(4)$.

3. Evaluate the following integrals:

a. $\int_0^{\pi/2} \frac{\sin 2x}{(a \sin^2 x + b \cos^2 x)^2} dx$ where $a, b > 0$.

b. $\int (1 + x^{-3/4})^{1/3} dx$.

4. a. If $y' = \frac{\sin^3(1/x) \cos(1/x)}{x^2}$ and $y(3/\pi) = 1$, find $y(4/\pi)$.

b. Evaluate the limit $\lim_{n \rightarrow \infty} \left(\frac{1}{2n+1} + \frac{1}{2n+3} + \cdots + \frac{1}{4n-3} + \frac{1}{4n-1} \right)$.

5. a. Find the volume of the solid obtained by revolving the region between the curve $y = x^2 - x^3$ and the x -axis about the y -axis.

b. Find the area of the smaller piece if a sphere with radius 3 is cut into two by a plane passing 2 units away from its center.

6. Show that $\int_0^\pi \frac{t \sin^2 t}{1+t^2} dt \leq \frac{\pi}{4}$.

Fall 2000 Final

1. Consider the rectangles bounded by the axes and the lines perpendicular to the axes through a point on the curve $y = (\ln x)^4/x^3$ for $x \geq 1$. Find the maximum value of the area of these rectangles if it exists.

2. Sketch the graph of the function $y = (x^2 - 2x)e^x$ by computing y', y'' , determining the shape of the graph, finding the critical points, the inflection points, and the x -intercepts, and the asymptotes.

3. a. Find the volume of the solid obtained by revolving the region between the graph of $f(x) = \begin{cases} \tan x/x & \text{if } 0 < x \leq \pi/4 \\ 1 & \text{if } x = 0 \end{cases}$ and the x -axis about the y -axis.

b. Evaluate the improper integral $\int_0^\infty \frac{dx}{a + be^x}$.

4. Evaluate the integrals:

a. $\int_{-\pi/2}^{\pi/2} \frac{\cos x}{(9 + 2 \sin x)(5 + \sin x)} dx$

b. $\int (\arcsin x)^2 dx$

5. Evaluate the following limits:

a. $\lim_{x \rightarrow \infty} x \int_0^1 e^{-t^2/x^2} \ln \left(1 + \frac{t}{x} \right) dt$

b. $\lim_{x \rightarrow 0} (\cos x)^{1/x^2}$

6. Let f be a continuous function and define

$$g(x) = \int_{-1}^1 f(t)|x - t| dt$$

for all x . Express $g''(x)$ in terms of $f(x)$ for x in $(-1, 1)$.

Fall 1999 Midterm I

1. Evaluate the following limits: (You are not allowed to use the L'Hôpital's Rule.)

a. $\lim_{x \rightarrow 0} \frac{\tan x - \sin x}{x(\cos^3 2x - 1)}$

b. $\lim_{x \rightarrow 2} \frac{\sin(x - 2)}{\sqrt{x + 3} - \sqrt{2x + 1}}$

2. Find $f'(8)$ if the function $f(x)$ satisfies the following properties:

- $f(ab) = f(a) + f(b)$ for all $a, b > 0$.
- $\lim_{x \rightarrow 1} \frac{f(x)}{x-1} = 2$.

3. Sketch the graph of $y = x^{-1/3} - x^{-2/3}$ by computing y' and y'' , determining their signs, finding the critical and the inflection points, indicating the intervals on which the function is increasing, decreasing, concave up, concave down, and finding the asymptotes.

4. Find y''' at $(x, y) = (1, 0)$ if $\sin(xy) + x = 1$.

5. a. The length of the hypotenuse of a right triangle is constant at 5 cm, and the length of one of its sides is increasing at a rate of 2 cm/sec. Find the rate of change of the area of the triangle, when this side is 4 cm long.

b. Show that for any twice differentiable function $f(x)$ on the entire real line such that $f(0) = 0, f(1) = 1, f(2) = 4$, there exists a point c in $(0, 2)$ such that $f''(c) = 2$.

Fall 1999 Midterm II

1. A 36π m³ container with cylindrical side and hemispherical ends is going to be constructed. The construction of the cylindrical side surface costs 3×10^9 TL/m² and the construction of the hemispheres costs 10×10^9 TL/m². Find the minimum cost of constructing this container.

2. Show that the function $f(x) = \int_{e^{-x}}^{e^x} \frac{\sin t}{t} dt$ has a critical point at $x = a$ where a is the positive real number satisfying $e^a + e^{-a} = 2\pi$ and determine whether this is a local maximum or minimum.

3. a. Find the volume of the solid generated by revolving the region between the curve $y = x^3$ and the x -axis for $0 \leq x \leq 1$ about the y -axis.

b. Find the area of the surface generated by revolving the curve $y = x^3$ for $0 \leq x \leq 1$ about the x -axis.

4. a. Evaluate the integral $\int_1^8 \frac{1}{x + 5\sqrt[3]{x}} dx$.

b. Show that $\frac{5\pi}{24} \leq \int_{\pi/3}^{\pi/2} \sqrt{1 + \sin^4 x} dx \leq \frac{\pi}{3\sqrt{2}}$.

5. Evaluate the limit

$$\lim_{x \rightarrow \infty} \left(1 + \ln(\cos(a/x)) \right)^{x^2}$$

where a is a constant.

Fall 1999 Final

1. a. Let

$$f(x) = \begin{cases} \frac{1}{x^2} \int_0^{|x|} \sin t^2 dt & \text{if } x \neq 0, \\ 0 & \text{if } x = 0. \end{cases}$$

Does $f'(0)$ exist? Explain.

b. Suppose $g(x)$ and $h(x)$ are differentiable functions on $[0, 1]$ and $g(0) = 4, g(1) = 1, h(0) = 3, h(1) = 0$. Show that there exists a point c in $(0, 1)$ such that $g'(c) = h'(c)$.

2. a. Find constants a and b such that $\lim_{x \rightarrow \infty} (xe^{1/x} - (ax + b)) = 0$.

b. Sketch the graph of $y = xe^{1/x}$.

3. Find $\int_{\pi/2}^{3\pi/2} f(x) dx$ if $f'(x) = \frac{\cos x}{x}$, $f(\pi/2) = a$ and $f(3\pi/2) = b$.

4. Evaluate the following integrals:

a. $\int \frac{1}{2x^2 + 5x + 2} dx$

b. $\int x \tan^2 x dx$

5. Evaluate the integral $\int_{-\infty}^{\infty} \frac{1}{e^x + ae^{-x}} dx$ where a is a positive constant.

Fall 1997 Midterm I

1. Assume the functions f and g have the following properties: for every ε and x ,

$$\text{if } 0 < |x - 2| < \frac{3\varepsilon}{2} \text{ then } |f(x) - 3| < \varepsilon,$$

$$\text{and if } 0 < |x - 2| < \varepsilon + \sqrt{\varepsilon} \text{ then } |g(x) - 4| < \varepsilon.$$

Find a number $\delta > 0$ such that for all x ,

$$\text{if } 0 < |x - 2| < \delta \text{ then } |f(x) + g(x) - 7| < \frac{1}{50}.$$

- 2a.** Evaluate the limit $\lim_{x \rightarrow 0} \frac{\cos^3 3x - \cos^3 2x}{x^2}$.
- 2b.** Find $\frac{d^2y}{dx^2}$ by implicit differentiation at the point $(1, -1)$: $x \cos^2(\pi y) + y^3 = 0$.
- 3.** Graph the function $f(x) = \frac{x^3 - x^2 + 3}{x^2 - 3}$ by computing f' and f'' , determining their signs, finding the critical points and inflection points, indicating the intervals on which the function is increasing, decreasing, concave up, down, and finding the asymptotes.
- 4.** A sphere of radius r is inscribed into a cone. Find the radius and the height of the cone (in terms of r) if its volume is to be minimum.
- 5.** A point A is moving in the counterclockwise direction along the ellipse $\frac{x^2}{9} + \frac{y^2}{16} = 1$ so that the ray OA has constant angular speed of 6 radians per second (where O is the origin). Find the rate of change of the area of the triangle formed by OA , the x -axis and the perpendicular from A to the x -axis at a moment when A is $(-12/5, 12/5)$.

Fall 1997 Midterm II

- 1.** Let the function f be defined as follows:

$$f(x) = \begin{cases} \int_0^x t \sin(1/t) dt & \text{if } x \neq 0, \\ 0 & \text{if } x = 0. \end{cases}$$

Find $f'(0)$.

- 2. a.** Evaluate the limit: $\lim_{x \rightarrow 0} \frac{\ln(1+x) - x + x^2/2}{x^3}$.

b. Find $\frac{dy}{dx}$ where $y = (\ln x)^{\ln x}$.

- 3.** Let C_1 be the graph of $y = x^m$, C be the graph of $y = kx^m$, and C_2 be the graph of $y = f(x)$ where $m > 0$ and $k > 1$ are constants, and f is an increasing continuous function with $f(0) = 0$. Find f if C bisects C_1 and C_2 in the following sense: for every (a, b) on C , the area of the region between C and C_1 for $0 \leq x \leq a$ is equal to the area of the region between C and C_2 for $0 \leq y \leq b$.
- 4.** The top and the bottom of a truncated rectangular pyramid of height h have sides of length a and b , and A and B , respectively. Find the volume.
- 5.** The plane region between the parabolas $y = 4 - x^2$ and $y = 8 - 2x^2$ has density $\delta(x, y) = 3y$. Find the coordinates of the center of mass.

Fall 1997 Final

1. Evaluate the following limits:

a. $\lim_{x \rightarrow 0} \left(\frac{\sin x}{x} \right)^{1/x^2}$.

b. $\lim_{n \rightarrow \infty} \int_0^n \frac{(1 + \pi/x)^x}{n} dx$.

2. Evaluate the following integrals. You may not use any reduction formulas or formulas from the integration tables.

a. $\int \frac{x dx}{\sqrt{x^2 + 2x}}$.

b. $\int_0^\infty \frac{x^2 + x}{(x^2 + 1)^2} dx$.

3. Let R be the region in the xy -plane bounded by the curve $y = 1/x^{3/2}$, the x -axis, the lines $x = u$ and $x = u^2$ for $u \geq 1$. Assume that R is revolved about the x -axis and a solid is generated. Let $V(u)$ denote the volume of this solid. Find the maximum value of $V(u)$ for $u \geq 1$.

4. An irregularly shaped water container is 5 units deep. It has a flat bottom and cross-sectional areas $A(z) = (z^3 + 2z + 15)^{1/3}$ units³ where z is the depth measured from the bottom and the cross-sections are taken by planes parallel to the bottom. Initially the container is full of water. Then the water is pumped out of the container at the constant rate of 0.3 units³/sec. How fast is the depth of the water decreasing when water is 2 units deep?

5. a. Determine whether the following improper integral converges or diverges:

$$\int_0^\infty \sqrt{x^2 + 1} e^{-x} dx$$

b. Let $p > q > 0$ be constants. Find all possible values of p and q for which the following improper integral is convergent:

$$\int_0^\infty \frac{dx}{x^p + x^q}$$

Fall 1996 Midterm I

1. Show that $(1 + x)^\alpha < 1 + \alpha x$ for all $x > 0$ and $0 < \alpha < 1$.

2. Find $(f \circ g \circ h)'(0)$ if $f(x) = \cos x$, $g(y) = \frac{\pi}{6} y^2 + y - 1$ and $h(z) = \frac{1}{\sqrt{1 + z + z^2}}$.

3. Consider the curve $y = \frac{3x^2 + 1}{2x^2 + 5}$. Find the points where the slope of this curve assumes its absolute maximum and absolute minimum.

4. A silo (base not included) is to be constructed in the form of a cylinder surmounted by a hemisphere. The cost of construction per square unit surface area is twice as great for the hemisphere as it is for the cylindrical sidewall. Determine the dimensions to be used if the volume is fixed and the cost of construction is to be kept to a minimum.

5. Let

$$f(x) = \begin{cases} 2x + x^2 \sin(1/x) & \text{if } x \neq 0, \\ 0 & \text{if } x = 0. \end{cases}$$

Find $f'(x)$ for all x . Is f' continuous at $x = 0$? Explain.

Fall 1996 Midterm II

1. Find $y'(1)$ if $x^y + y^x = 3$.

2. Find the area of the surface of revolution obtained by rotating the curve $y = \frac{1}{2} \left(\frac{1}{1-\alpha} x^{1-\alpha} - \frac{1}{1+\alpha} x^{1+\alpha} \right)$, $0 \leq x \leq 1$, about the x -axis where $0 < \alpha < 1$.

3. Evaluate the integral $\int_0^1 \frac{x^2 + 1}{x^2 - x - 6} dx$.

4. Evaluate the limit $\lim_{n \rightarrow \infty} \left(\ln n - \frac{1}{n} \sum_{k=n+1}^{2n} \ln k \right)$.

5. Evaluate the limit $\lim_{x \rightarrow \infty} \left(x \int_0^1 \frac{e^{-xt}}{1+t^2} dt \right)$.

Fall 1996 Final

1. If $f(x) = x \int_e^x \frac{dt}{\ln t}$ for $x > 1$, find $f''(e)$.

2. For $0 \leq t \leq 1$, let $A(t)$ denote the area of the triangle bounded by the x -axis, the y -axis and the tangent line to the curve $y = \ln x$ at $(t, \ln t)$. Find the maximum value of $A(t)$.

3. Sketch the graph of $y = x(\ln x)^2$.

4. [missing]

5. Evaluate the improper integral $\int_1^{\infty} \left(\frac{1}{x} + \tan^{-1} x - \frac{\pi}{2} \right) dx$.

Fall 1995 Midterm I

1. Let $A(0, t^2/\sqrt{3})$ and $B(4, 0)$ where the time $0 \leq t < \infty$ is measured in seconds. Let θ be the measure of the angle OBA . At what times is θ changing the fastest and the slowest?

2. Find y'' at $x = 0$ if $\sin xy + x^2 + y = \pi$.

3. Find the constant k for which the limit

$$\lim_{x \rightarrow 0} \frac{\sin(x + kx^3) - x}{x^5}$$

exists, and find the value of the limit then for this k .

4. You are drawing up plans for the piping that will connect a drilling rig 30 kilometers offshore to a refinery on shore 35 kilometers down the coast. How far away from the refinery should the pipeline reach the coast to give the least expensive connection if underwater pipe costs 5 BTL per kilometer and land based pipe costs 4 BTL per kilometer. (1 BTL=1 billion Turkish Liras.)

5. Graph the function $y = \frac{3x^3 - 2x}{x^2 - 1}$ by finding its asymptotes, local minimums and maximums, inflection points and intercepts.

Fall 1995 Midterm II

1. Let D_n denote the region that is under the curve $y = \frac{1}{x^2\sqrt{x^2-1}}$, above the x -axis and between the lines $x = 1 + \frac{1}{n}$ and $x = n$, where n is a positive integer. Revolve the region D_n around the y -axis and denote the volume of the resulting solid by V_n . Find $\lim_{n \rightarrow \infty} V_n$.

2. For which value of α , $\int_{\pi/6}^{\pi/3} (\log_{\alpha} 2)(\log_2 \sin x)' \tan x dx = \frac{\pi}{6}$?

3. Evaluate the limit $\lim_{x \rightarrow \infty} x \int_0^x e^{t^2-x^2} dt$.

4. Consider the region inside the circle $x^2 + (y - 2)^2 = 1$ and between the lines $x = -1/2$ and $x = 1/2$. Find the surface area of the solid obtained by revolving this region around the x -axis.

5. Graph the function $y = e^{1/x}$ by finding its

- a. asymptotes and $\lim_{x \rightarrow 0^-} y'$,
- b. local minimums and maximums,
- c. inflection points,
- d. making a table of the relevant values.

Fall 1995 Final

1a. Explain whether $\int_{-\infty}^{\infty} \frac{x^2}{e^x + e^{-x}} dx$ converges or diverges.

1b. Evaluate $\int_{10}^{\infty} \frac{dx}{x(\ln x)(\ln \ln x)}$.

2a. Find $\lim_{x \rightarrow 0} \left(\frac{\tan x}{x} \right)^{1/x^2}$.

2b. Given that $t \rightarrow \infty$, simplify $(t - t^{1/2} + O(1)) \cdot (t^{1/2} + 1 + O(t^{-1/2}))$.

2c. Explain briefly whether true or false: As $n \rightarrow \infty$,

$$\frac{1}{n+1} - \frac{1}{n+2} = o(n^{-3/2}).$$

3. According to Newton's law of cooling, the rate at which the temperature of an object is changing at any given time is proportional to the difference between its temperature and the temperature of its environment (which is assumed to be constant). A pan of water at 25°C was put in a refrigerator. Ten minutes later, the temperature of the water was 13° ; 20 minutes after that, it was 4° . Use Newton's law of cooling to calculate how cold the refrigerator was.

4. Evaluate $\int_{1/2}^2 \frac{dx}{x^3 + 6x + 7}$.

5. The region bounded by the curve $y = (\arctan x)^2$, the x -axis and the line $x = 1$ is revolved about the y -axis to generate a solid. Find the volume of this solid.

1. The graph of f is as shown. Draw the graph of the function $g(x) = \frac{f(x)}{1+f(x)}$. Indicate the asymptotes, extrema and the inflection points.

[The picture shows a graph $y = f(x)$ such that $f(-4) = 0$, $f(-3) = -1$, $f(-2) = -2$, $f(-1) = -1$, $f(0) = 0$, $f(2) = 2$, $f(3) = 0$, $f(7/2) = -1$; f is increasing on $[-2, 2]$ and decreasing on $(-\infty, -2]$ and $[2, \infty)$. It is not clear from the picture if f is piecewise-linear.]

2. Find all positive integer values of n for which $\cos(x^{2/n})$ is differentiable at $x = 0$.

3. Estimate $\sin 29^\circ$ by using the quadratic approximation. Give an upper bound for the error.

4. How many real solutions to $x^3 + 3x - 5 = 0$ are there? Apply Newton's Method two steps to locate any root.

5. A straight line passing through the point $(1/2, 1)$ divides the rectangular region with corners at $(0, 0)$, $(2, 0)$, $(2, 4)$, $(0, 4)$ into two subregions. Among all triangular subregions with the origin as one vertex that are formed by such a division, find the ones which have maximum and minimum areas.

Fall 1994 Midterm II

1a. Given that $g(x) = \int_1^{f^{-1}(x)} \sqrt{1+t^3} dt$ and $f(3) = 2$, $f'(3) = 5$, find $g'(2)$.

1b. Find the volume of the solid described as follows: The base of the solid is the region between the curve $y = 3\sqrt{\sin x}$ and the interval $[0, \pi]$ on the x -axis. The cross-sections perpendicular to the x -axis are squares.

2a. Find $\lim_{n \rightarrow \infty} \left(\frac{1}{5n^2 + 1} + \frac{1}{5n^2 + 2} + \cdots + \frac{1}{6n^2} \right)$.

2b. Find $\lim_{x \rightarrow \infty} \frac{\sqrt{\ln x}}{x} \int_2^x \frac{dy}{\sqrt{\ln y^2}}$.

3. Find the centroid of the quarter ellipse $\frac{x^2}{a^2} + \frac{y^2}{b^2} = 1$, $x, y \geq 0$.

4. Solve the initial value problem:

$$\frac{1}{y+2} \frac{dy}{dx} = x \cos^2 x^2, \quad y = e^2 - 2 \text{ when } x = 0.$$

5a. Estimate $\ln 0.6$ by quadratic approximation.

5b. Estimate $\ln 0.6$ by using Simpson's rule with $n = 4$.

Fall 1994 Final

1a. Evaluate $\int_0^{\ln \sqrt{3}} e^{-x} \arctan(e^x) dx$.

1b. Evaluate $\int \frac{dx}{(x^2 + 2x + 2)^{3/2}}$.

2. Evaluate $\int x^5 e^{x^3} dx$.

3a. Determine whether $\int_0^\infty \frac{dx}{\sqrt{x^3 + 1}}$ converges or diverges. Give reasons.

3b. For a certain number A the integral $\int_2^\infty \left(\frac{Ax}{x^2 + 1} - \frac{1}{2x + 1} \right) dx$ converges. Find that value of A and the integral.

4. A boat is going in a straight line at 80 m/min when the engine of the boat is shut off. The boat is subject to a deceleration (i.e. negative acceleration) proportional to its speed. One minute later the speed of the boat is reduced to 40 m/min. How far has the boat drifted in that one minute?

5. Consider $y = \operatorname{sech} x$.

a. Plot the graph of the function by considering the asymptotes and the signs of y' and y'' .

b. Find the quadratic approximation of $y = \operatorname{sech} x$ about $x = 0$.

c. Find the volume of the solid obtained by revolving the region between $y = \operatorname{sech} x$ and the x -axis about the x -axis.

Fall 1993 Midterm I

1a. Let $f(x) = x + \frac{\sin x}{2x - \frac{12}{x - 1}}$.

i. Find all the points at which f is discontinuous.

ii. Find all discontinuities at which f has a continuous extension.

1b. Let f be a continuous function and assume that for each $0 \leq x \leq 1$ we have $0 \leq f(x) \leq 1$. Show that the equation $f(x) = x$ has a solution in the interval $[0, 1]$.

2a. Let $y = t + \sin^2 u^2$ where at $t = 0$, $u = \sqrt{\frac{\pi}{3}}$ and $\frac{du}{dt} = 1$. Find y and $\frac{dy}{dt}$ at $t = 0$.

2b. Consider the equation $\cot \pi x = x$.

i. Show that this equation has exactly one solution r_k in $I_k = (k, k + 1)$ for every $k \in \mathbb{Z}$.

ii. Apply Newton's method once to estimate r_k .

3a. Let $f(x) = \sqrt{x}$.

i. Find the quadratic approximation of $f(x)$ for $x \approx 1$.

ii. Determine the accuracy of this approximation when $\frac{3}{4} \leq x \leq \frac{5}{4}$.

3b. Show that the equation $x^8 + x - 1 = 0$ has exactly two real roots.

4a. Evaluate $\lim_{x \rightarrow \infty} (\sqrt{3x^2 + 2x - 1} - \sqrt{3x^2 - x + 5})$.

4b. Let $f(x) = x^{-3} \sin 3x + Ax^{-2} + B$ where A and B are constants. Determine the values of A and B for which $\lim_{x \rightarrow 0} f(x) = 2$.

5. Graph the function $f(x) = \frac{x^2}{4 + x|x|}$ by computing f' and f'' ; determining their signs; finding the critical points and the inflection points; indicating the intervals on which the graph is rising, falling, concave up, down; and finding the asymptotes.

6. If the sum of the volumes of a cube and a sphere is held constant, what ratio of an edge of the cube to the radius of the sphere will make the sum of the surface areas

a. as small as possible?

b. as large as possible?

Fall 1993 Midterm II

1a. Find $\lim_{n \rightarrow \infty} \left(\frac{1}{n+1} + \frac{1}{n+2} + \cdots + \frac{1}{3n} \right)$.

1b. Given that $f(1) = 3$, $f(2) = 5$, $f(4) = 7$ and $f(14) = 23$, evaluate $\int_1^2 (x^2 + 1)f'(x^3 + 3x) dx$.

2a. Find $\lim_{y \rightarrow 0} \frac{1}{y} \int_0^y (\cos 2t)^{1/t^2} dt$.

2b. If $x^2 y'' = 1$ for all $x > 0$ and $y' = -1$, $y = 1$ when $x = 1$, find y for all $x > 0$.

3a. Estimate $\ln(1 + 2x)$ about $x = 0$ by using the quadratic approximation and calculate $\ln(1.4)$ approximately.

3b. Estimate $\ln(1.4)$ using Simpson's method by choosing 4 subintervals.

4a. The curve $x = y^{1/2} - y^{3/2}/3$ where $0 \leq y \leq 1$ is rotated about the y -axis. Find the area of the surface of revolution.

4b. Find the x -coordinate of the centroid of the curve in part (a).

5a. Find the area of the region bounded by the curves $y = \tan x$, $y = 0$, $y = 1$ and $x = \pi/2$.

5b. Find the volume of the solid generated by revolution of the region in part (a) about the x -axis.

6a. Plot the graph of the function $y = x^2 e^x$.

6b. Find $\int \frac{dx}{1 + 2e^{-3x}}$.

Fall 1993 Final

1. a. Draw the graph of $y = \operatorname{sech} x$ by computing y' , y'' , and finding the critical points, the inflection points, and the asymptotes.

b. Find the area between the curves $y = \operatorname{sech} x$ and $y = \frac{3}{4} \cosh x$.

2. Find the volume generated by revolving the region bounded by $y^2 = x^5 - x^8$ about the y -axis.

3. a. Find the quadratic approximation of the function $f(x) = x^x - \frac{1}{2-x}$ around $x = 1$.

b. Estimate the value of x^x for $x = 10/11$.

4. Let $f(x) = \int_1^e t^x (\ln t)^2 dt$.

a. Compute $f(x)$.

b. Prove that f is continuous at $x = -1$.

5. Evaluate $\int_0^\infty \frac{x dx}{(x+1)(x^2+2)}$.

6. a. Find y as a function of x if $x \frac{dy}{dx} = \tan y$ and $y = \frac{\pi}{6}$ when $x = \frac{1}{2}$.

b. Prove that

$$\int_0^x \left(\int_0^u f(t) dt \right) du = \int_0^x f(u)(x-u) du .$$

Fall 1992 Midterm I

1. Let $f(x) = g(x + g(x))g(x)$ where g is such that $g(0) = 2$, $g(1) = 1$, $g(2) = -5$, $g'(0) = -3$, $g'(1) = 7$, $g'(2) = 4$. Find $f'(0)$.

2. Find the normal to the curve $y = 4x^2 + \sin(\pi \tan(x^2))$ at the point where $x = \frac{\sqrt{\pi}}{2}$.

3a. Consider $f(x) = \sqrt{x^2 + x} - \sqrt{x^2 - x}$.
 i. Find the domain of the function f .
 ii. Evaluate $\lim_{x \rightarrow -\infty} f(x)$.

3b. Evaluate $\lim_{x \rightarrow 0} \frac{\sin \alpha x - \tan \alpha x}{x^3}$ where α is a constant.

4. a. Find the values of α , β , γ for which the function

$$f(x) = \begin{cases} 2 & \text{if } x = 0, \\ -x^2 + 4x + \alpha & \text{if } 0 < x < 1, \\ \beta x + \gamma & \text{if } 1 \leq x \leq 3. \end{cases}$$

is differentiable on $[0, 3]$.

b. Find the local maxima and minima of f for these values of α , β , γ .

5. A 3 m long wire is used for making a circle and an equilateral triangle. How should the wire be distributed between the two shapes to maximize the sum of the enclosed areas?

6. Graph the function $f(x) = \frac{x}{x^3 + 1}$ by computing f' and f'' ; determining their signs; finding the critical points and the inflection points; indicating the intervals on which the graph is rising, falling, concave up, down; and finding the asymptotes.

Fall 1992 Midterm II

1. a. Find the quadratic approximation at $x = 0$ of

$$f(x) = \frac{2}{\sqrt{\pi}} \int_0^x e^{-t^2} dt .$$

b. Find the error in this approximation for $|x| \leq 1$.

2. a. A solid is generated by revolving the region bounded by the graph of $y = f(x)$, the x -axis, the lines $x = 1$ and $x = a$ about the x -axis. Its volume, for all $a \geq 1$, is $a^2 - a$. Find $f(x)$.

b. A surface is generated by revolving the curve $y = \frac{\sqrt{x}}{3}(3 - x)$, $0 \leq x \leq 3$, about the x -axis. Find its area.

3. a. Using the Mean Value Theorem for Definite Integrals, find upper and lower

bounds for the value of $\int_0^1 \frac{dx}{x^3 + 1}$.

b. Obtain better bounds by considering

$$\int_0^1 \frac{dx}{x^3 + 1} = \int_0^{1/2} \frac{dx}{x^3 + 1} + \int_{1/2}^1 \frac{dx}{x^3 + 1}$$

and using the same theorem for the integrals on the right.

4. Evaluate:

a. $\lim_{x \rightarrow 0} \left(\frac{\sin x}{x} \right)^{1/x^2}$

b. $\lim_{x \rightarrow 0} \frac{x}{5^x - 3^x}$

5. Evaluate:

a. $\int_0^{\pi/2} \frac{\sin x \, dx}{3 + \cos^2 x}$

b. $\int_e^{e^2} \frac{dx}{x \ln x}$

6. a. Show that the difference of the functions $f(x) = \sin^{-1} \left(\frac{x^2 - 1}{x^2 + 1} \right)$ and $g(x) = 2 \tan^{-1} x$ is a constant for $x \geq 0$.

b. Find this constant.

Fall 1992 Final

1. Let f and g be continuous on $[a, b]$ and that $f(a) \leq g(a)$ and $f(b) \geq g(b)$. Show that there exists a point c in $[a, b]$ such that $f(c) = g(c)$.

2. a. Given that

$$\int_0^\pi (f(x) + f''(x)) \sin x \, dx = A \quad \text{and} \quad f(\pi) = B,$$

find $f(0)$ in terms of A and B .

b. Let

$$f(x) = \int_0^x \frac{dt}{\sqrt{1+t^3}} \quad \text{for } x \geq 0,$$

and let $g = f^{-1}$. Show that g'' is proportional to g^2 .

3. a. Show that

$$\Gamma(x) = \int_0^\infty e^{-xt} t^{x-1} \, dt$$

converges for all $x > 0$.

b. Show that $\Gamma(x+1) = x\Gamma(x)$ for $x > 0$.

4. a. Given

$$f(x) = \begin{cases} \frac{g(x)}{x} & \text{for } x \neq 0, \\ 0 & \text{for } x = 0, \end{cases}$$

and $g(0) = 0$, $g'(0) = 0$, $g''(0) = 17$, find $f'(0)$.

b. Evaluate the limit $\lim_{x \rightarrow 0^+} x^{\arcsin x}$.

5. Evaluate the integral $\int \ln(\sqrt{x} + \sqrt{1+x}) \, dx$.

6. A garden is to be designed in the shape of a circular sector with radius R and the central angle θ . The garden is to have fixed area A . For what values of R and θ will the length of the fencing around the perimeter be minimized?

Fall 1991 Midterm I

1. Use the ε - δ definition to show that $\lim_{x \rightarrow 2} (x^2 + 1) = 5$.

2. Let

$$f(x) = \begin{cases} g(x) \cos(1/x) & \text{if } x \neq 0, \\ 0 & \text{if } x = 0 \end{cases}$$

where g is a differentiable function with $g(0) = g'(0) = 0$. Show that f is differentiable at $x = 0$ and $f'(0) = 0$.

3. Find the local minimum, local maximum and the inflection points of the function

$$f(x) = \begin{cases} x^2 & \text{if } x \leq 1, \\ (2-x)^3 & \text{if } x > 1. \end{cases}$$

4. Sketch the graph of $y = \frac{2+x-x^2}{(x-1)^2}$.

5. Let $y = \sin x + \cos x$ and

$$z = \sin \left(\frac{y^3}{\sin \left(\frac{y^3}{\sin y} \right)} \right).$$

Find the derivative of z with respect to x at the point $\frac{\pi}{4}$.

6. An isosceles triangle is inscribed into a circle of radius r . If the top angle of the triangle is required to lie between 0 and $\frac{\pi}{2}$, find the largest and the smallest values possible of the perimeter of the triangle.

Fall 1991 Midterm II

1. Evaluate the following limits:

a. $\lim_{x \rightarrow 0} \frac{\int_0^x \sin t^3 dt}{\sin x^4}$

b. $\lim_{x \rightarrow 0} (e^x + x)^{1/x}$

2. Evaluate the following integrals:

a. $\int \frac{x^{49}}{1+x^{100}} dx$

b. $\lim_{x \rightarrow 0} \frac{dx}{\sqrt{e^{2x} - 1}}$

3. Let $0 < a < b$. Show that

$$\frac{b-a}{1+b^2} < \tan^{-1} b - \tan^{-1} a < \frac{b-a}{1+a^2}.$$

4. Find the area of the surface generated by revolving the curve $x = t^2$, $y = t^3/3 - t$, $-\sqrt{3} \leq t \leq \sqrt{3}$, about the y -axis.

5. The region between the graphs of $y = x^2$ and $y = \frac{1}{2} - x^2$ is revolved about the y -axis to form a lens. Compute the volume of the lens.

6. A point $P(t)$ is moving along the x -axis in the positive direction at a speed of 5 cm/sec, and is at the origin at time $t = 0$. Find the rate of change, at time $t = 0$, of the area under the curve $y = (\tanh^2 x + \cos^3 x)^4$ and above the interval $[P(t), 100]$.

Fall 1991 Final

1. Discuss the continuity of the following functions in their domain of definition:

$$\mathbf{a.} \quad f(x) = \begin{cases} \frac{1}{1 + e^{1/x}} & \text{if } x \neq 0, \\ 1 & \text{if } x = 0. \end{cases}$$

$$\mathbf{b.} \quad f(x) = \begin{cases} \frac{x - |x|}{x} & \text{if } x < 0, \\ 2 & \text{if } x = 0. \end{cases}$$

3. Evaluate

$$\lim_{n \rightarrow \infty} \left(\ln \sqrt[n]{1 + \frac{1}{n}} + \ln \sqrt[n]{1 + \frac{2}{n}} + \cdots + \ln \sqrt[n]{1 + \frac{n}{n}} \right)$$

by relating it to a definite integral.

4. Evaluate:

$$\mathbf{a.} \quad \int x^3 e^{x^2} dx$$

$$\mathbf{b.} \quad \int \frac{\sqrt{x}}{\sqrt{1 - x^3}} dx$$

5. Evaluate $\int \frac{x}{\sqrt{x^2 + 2x + 5}} dx$.

6. Evaluate $\int \frac{x dx}{(x + 1)^2(x^2 + 1)}$.

7. Find the volume of the solid generated by revolving the region R bounded by $y = x^3 - 8x$ and $y = -x^2 + 4x$ for $0 \leq x \leq 3$ about the line $x = -1$.

8. The continuously differentiable curve $y = f(x)$ passes through the point $(0, 0)$, and for every $x > 0$ the length of the curve from $(0, 0)$ to $(x, f(x))$ is $e^x + f(x)$. Find $f(x)$.

9. a. Evaluate $\lim_{x \rightarrow \infty} \left(1 - \frac{1}{x} + \frac{1}{x\sqrt{x}}\right)^{2x}$.

b. Differentiate $\log_x(x^2 + 5)$ with respect to x .

Fall 1990 Midterm I

1. Discuss the existence of the limit $\lim_{x \rightarrow 0} \llbracket \sin x + \cos x \rrbracket$ where for any real number a , $\llbracket a \rrbracket$ denotes the greatest integer in a .

2. A function f satisfies the following condition at a point $x = x_0$: There are numbers $M > 0$, $\beta > 0$ and α such that

$$0 < |x - x_0| < \beta \implies |f(x) - f(x_0)| < M|x - x_0|^\alpha.$$

Then show that

a. if $\alpha > 0$, then f is continuous at $x = x_0$.

b. if $\alpha > 1$, then f is differentiable at $x = x_0$.

3. Find the equation of the line through the point $(3, 0)$ that is normal to the parabola $y = x^2$.

4. Let $f(x) = \sqrt{x}$. Find a formula for the n th derivative $f^{(n)}$ and prove your formula using induction.

5. Let $g(x) = 1 + \sqrt{x}$ and $(f \circ g)(x) = 3 + 2\sqrt{x} + x$. Find $f'(2)$ by

a. by first solving for f and then differentiating,

b. by the chain rule.

6. Consider the equation $2 \sin x = x$.

a. Show that the equation above has a solution $c \in \left(\frac{\pi}{2}, \frac{2\pi}{3}\right)$.

b. Can we find this solution by using Picard's method? If your answer is YES, find an interval I such that every $x_0 \in I$ is a valid initial value for Picard's method.

Fall 1990 Midterm II

1. A rectangle of fixed perimeter P is rotated about one of its sides to generate a cylinder. Of all such possible rectangles, find the dimensions of the one which generates the cylinder of greatest volume.

2. For $a > 1$ show that $\frac{a-1}{a} \leq \ln a \leq a-1$.

3. Evaluate:

a. $\lim_{x \rightarrow 0} \frac{\tan x - x}{x - \sin x}$

b. $\lim_{x \rightarrow 0^+} \frac{\ln(\tan 2x)}{\ln(\tan 3x)}$

4. Find the volume of the solid generated by revolving the region bounded by the graphs of $y = 4 - x^2$ and $y = 0$ about the line $x = 3$.

5. Show that the length of the sine curve $y = \sin x$ for $0 \leq x \leq \pi$ is equal to half of the circumference of the ellipse $2x^2 + y^2 = 2$.

6. Evaluate:

a. $\int e^{(x+e^x)} dx$

b. $\int_0^4 \frac{2dx}{\sqrt{x}(4 + \sqrt{x})}$

Fall 1990 Final

1. When y is given by the following relation find y'' in terms of x and y . Simplify your answer.

$$\ln(x - y) = x + y$$

2. Calculate the following limit: $\lim_{x \rightarrow 0} \left(\frac{3}{x^4} + \frac{1}{x^2} - \frac{3 \tan x}{x^5} \right)$.

3. Find the following antiderivative: $\int \sqrt{4 + 3^x} dx$.

4. Find the following antiderivative: $\int \ln(x + \sqrt{1 + x^2}) dx$.

5. Find the area of the surface obtained by revolving $y = \sin x$ around the x -axis for $0 \leq x \leq \pi$.

6. A rectangle with sides of length a and b is inscribed in a isosceles triangle in such a way that one of the sides with length b is contained in the base of the triangle. Find the minimum possible area of triangle.

7. A point P at the origin of the xy -plane is attached by a string of length a to a mass M located at the point $(a, 0)$. The point P then moves up the y -axis, dragging the mass M by the string. As it moves, the mass traces a differentiable curve $y = f(x)$. Find the equation of the curve $y = f(x)$.

8. At points of the curve $y = 2\sqrt{x}$, lines of length $h = y$ are drawn perpendicular to the coordinate plane. Find the area of the surface formed by these lines from $(0, 0)$ to $(3, 2\sqrt{3})$.

Fall 1989 Midterm

1. Let $f(x)$ be a differentiable function on $(0, \infty)$ and assume that $\lim_{x \rightarrow 0} \frac{f(x)}{Ax^4 + Bx^3} = C$, where A, B, C are constants and $A \neq 0$.

a. Find $\lim_{x \rightarrow 0} \frac{f(x)}{x^2}$.

b. Let

$$H(x) = \begin{cases} \frac{f(x)}{x} & \text{if } x > 0, \\ 0 & \text{if } x = 0, \\ -\frac{f(-x)}{x} & \text{if } x < 0. \end{cases}$$

Show that $H'(0)$ exists, and find its value.

2. Let $f_1(x)$, $f_2(x)$ and $f_3(x)$ be differentiable functions on \mathbb{R} such that $f_i(m) = 4 - i + m$ and $f'_i(m) = i + m$ where $i = 1, 2, 3$ and m is an integer. Let $F(x) = (f_1 \circ f_2 \circ f_3)(x)$. Find $F'(1)$.

Remark: The data above is enough to solve this problem. However if you want to know if such functions do exist, here are three functions satisfying these conditions: $f_i(x) = 4 - i + x + \frac{i-1}{2\pi} \sin 2\pi x + \frac{1}{4\pi} \sin 2\pi x^2$, $i = 1, 2, 3$. Note that you should solve the problem without using this example.

3. Sketch the graph of $y = \frac{x^3 - x^2 + 4}{x - 1}$.

4. Let $P(x)$ be a polynomial of degree n , and assume that $P(x) \geq 0$ for all $x \in \mathbb{R}$. Show that for all $x \in \mathbb{R}$,

$$P(x) + P'(x) + P''(x) + \cdots + P^{(n)}(x) \geq 0.$$

5. Assume that in an analogue clock the minute arm is twice as long as the hour arm. Find the first time of the day when tips of the minute arm and the hour arm are moving away from each other the fastest.

Remark: You may assume that the arms of the clock lie in the same plane.